



CA HCD ESG-CV Training Series: Homelessness 101



Learning Objectives

- 1. Trainees will be able to describe key causes of homelessness, definitions of homelessness, and evidence-based strategies to address homelessness**
- 2. Trainees will gain a threshold understanding of various evidence-based interventions within the homelessness response system**
- 3. Trainees will be able to describe and explain the current landscape of key homeless system of care partners**
- 4. Trainees will be able to describe and explain federal and state performance benchmarks**
- 5. Trainees will be able to meaningfully engage with people experiencing homelessness to improve the local system**



Questions to Answer

- What causes homelessness?
- How do we define homelessness?
- How do we address homelessness?
- Who are key homeless system of care partners?
- How do we measure success?
- How do we engage people experiencing homelessness to improve our work?



Causes & Definitions



What Causes Homelessness?

- Housing Costs > Income to Pay for Housing
 - [Lack of affordable housing](#)
 - Poverty
- Also consider
 - Racial inequities
 - Health and healthcare access
 - Mental and behavioral health issues
 - IPV
 - Systems involvement (child welfare, justice system, etc.)
 - Family conflict
- BUT...

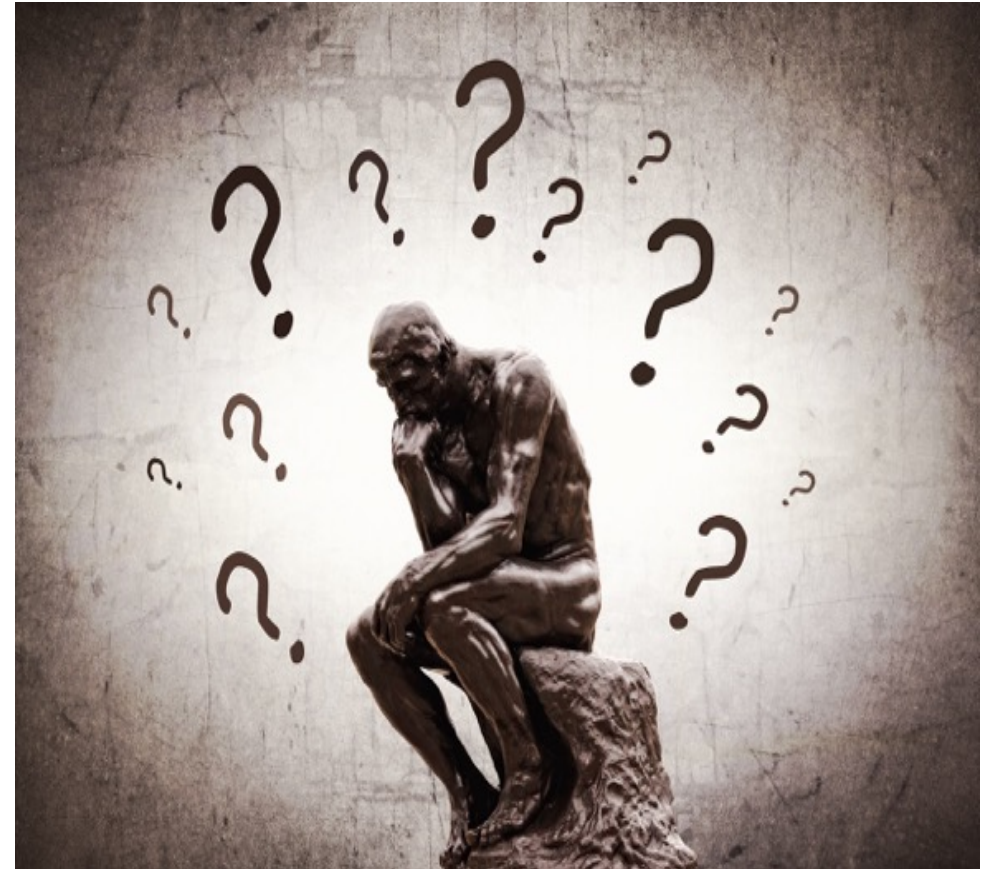


Definitions of Homelessness

The McKinney-Vento Act has TWO definitions?!
WHY????

The HUD definition:

1. Literally homeless
2. Imminently homeless (< 2 weeks)
3. Other definitions (> 2 weeks)
4. Unsafe situations



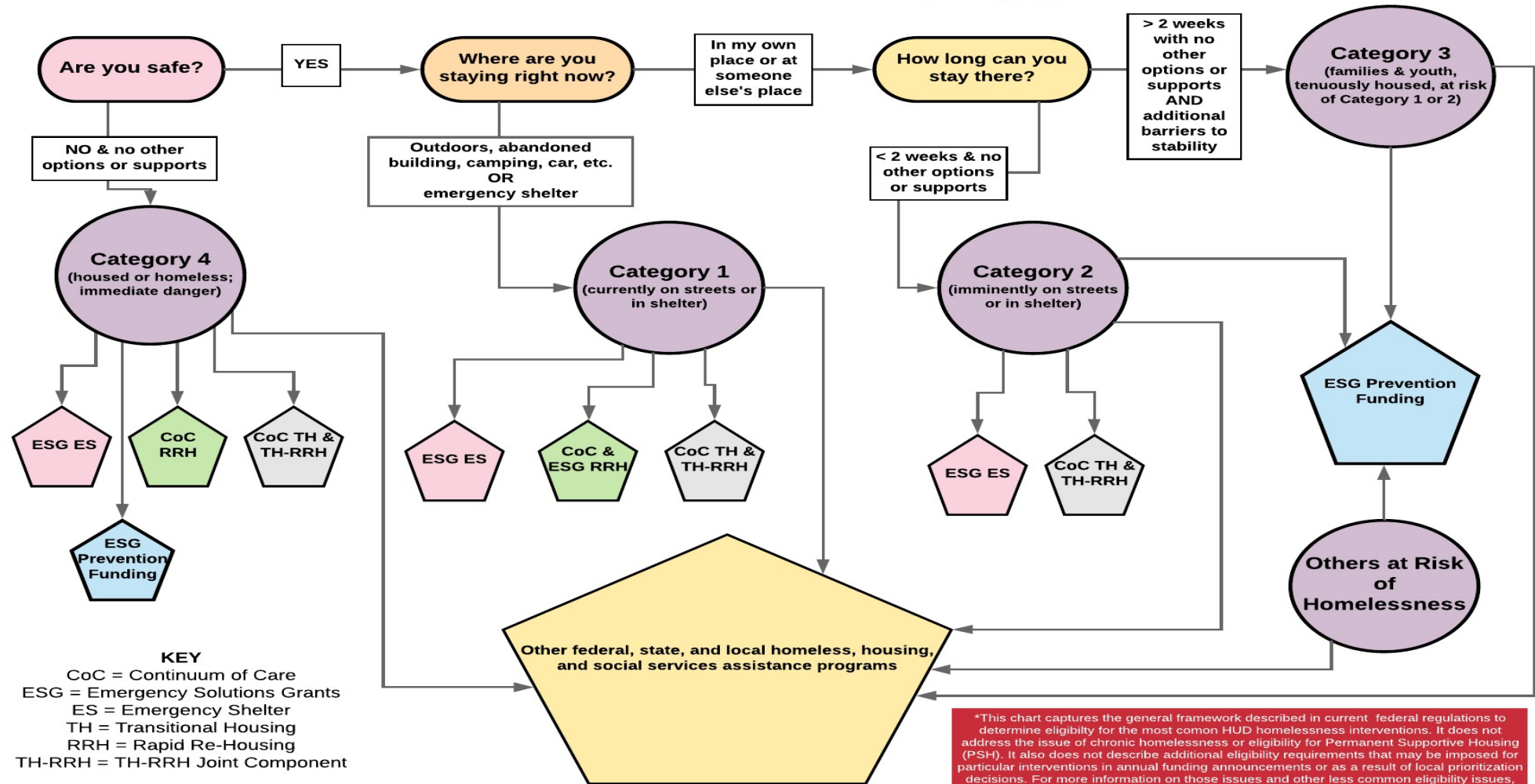
ELIGIBILITY, not definitions...



Understanding HUD Eligibility

Simple Chart for Determining Eligibility for HUD Homeless Assistance Programs

Do Not Use This Chart Without the Accompanying Appendix





HUD Definition of Homelessness

Who is not eligible for most HUD assistance? (Category 3)

Couch surfing
longer than 2
weeks

Doubled up
longer than
2 weeks

Sober
living
homes

Motels paid for
by client longer
than 2 weeks

Note: Requirements for funding/definitions for homelessness vary by funding stream. Always verify!



Other Definitions of Homelessness

McKinney-Vento Education

- Homeless children & youth means individuals who lack a fixed, regular, and adequate nighttime residence (no matter how long they can stay)

Runaway & Homeless Youth Act

- Youth not more than 21 years of age...for whom it is not possible to live in a safe environment with a relative and who have no other safe alternative living arrangement (no matter how long they can stay)

Department of Veteran Affairs

- McKinney-Vento Act HUD homeless definition

State of California

- McKinney-Vento Act HUD homeless definition

(CA WIC Sec. 8255)

Chronic Homelessness Definition

- Simplified definition of chronic homelessness:
 - Disability
 - Lives in a place not meant for human habitation or emergency shelter
 - Has been homeless for at least 12 months, or four times in the past three years totaling 12 months
- Small group, high vulnerability, and high public costs if not addressed





Strategies & Partners



Strategies to Address Homelessness

Housing ends homelessness!

■ Housing First

- Housing as a tool
- Rapid connection to housing
- Services are available & optional
- Housing is not contingent on participation in services

■ Permanent Housing

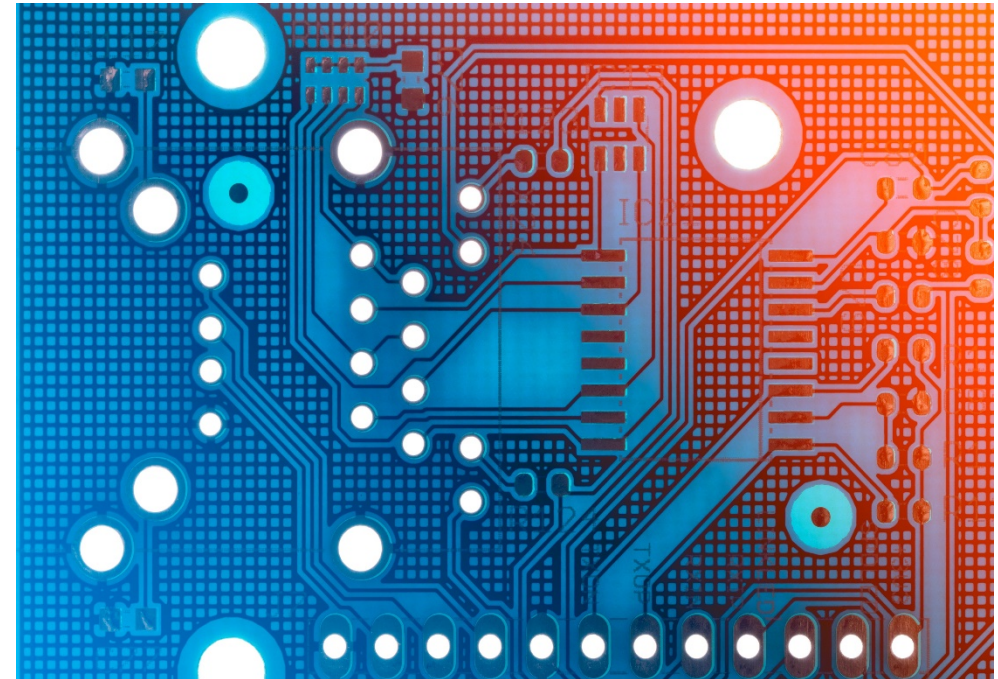
- Rapid Re-Housing (RRH)
- Permanent Supportive Housing (PSH)

**HOUSED PEOPLE
ARE NOT HOMELESS**



Strategies to Address Homelessness

- Crisis response **system**
 - Efficient, effective, accessible, and FAST
 - Systemic approach, community-wide coordination and performance measures
 - “Right-sized” temporary interventions
 - Low-barrier, housing-focused shelter
 - Transitional housing for specific populations
 - Diversion whenever safe and possible
 - Prevention (carefully targeted)





Evidence on PSH, RRH, and Housing First strategies

PSH has a long-term retention rate of up to 98%.

A variety of studies have shown that between 75% & 91% remained housed a year after being rapidly re-housed.

A Housing First program could cost up to \$23,000 less per consumer per year than a shelter program.

Low-barrier shelters serve and house more people.

Communities have been able to reduce shelter admissions by as much as 50% after instituting system-wide assisted rapid resolution strategies.

[Housing First Fact Sheet](#) (NAEH)

[Data Visualization: The Evidence on Housing First](#) (NAEH)



Evidence on PSH, RRH, and Housing First strategies

RRH is effective and cost-effective

Around 80% of participants in SSVF do not return to homelessness.

RRH is as or more effective than TH at a significantly lower cost.

Increasing RRH resources improves “flow” off the streets and out of shelter.

Housing provides the foundation from which people can address other issues they want to focus on.

[NCHAV - Supportive Services for Veteran Families \(SSVF\)](#) (US Dept, of Veteran Affairs)

[Rapid Re-housing’s Role in Responding to Homelessness: What the Evidence Says](#) (Urban Institute)

[Rapid Re-Housing](#) (NAEH)

**Think of 3
partners in
ending
homelessness.**



Partners in Ending Homelessness

- Continuums of Care (CoCs)
- Healthcare System
 - Housing is healthcare!
 - Mental and behavioral health supports
- Criminal Justice
 - Crisis response, criminalization of homelessness
 - Re-entry from jails and prisons
- Tribal nations
- Community organizations, especially those led by and for BIPOC
- People who have experienced homelessness





Partners in Ending Homelessness

- Healthcare System
- Mental & behavioral health
- Child Welfare
- Criminal Justice
- Police
- Service providers
- Anti-poverty agencies
- Community organizations
- BIPOC-led organizations
- People who have experienced homelessness
- State of California
- Veterans Administration
- Disability rights organizations
- HUD
- Local government
- Continuum of Care
- Domestic violence providers
- LGBTQ+ organizations
- Homeless coalitions
- Landlords
- Tribal nations
- Legal system
- Substance use programs
- Libraries
- Housing providers
- Universities
- Public housing authorities
- Workforce development
- Affordable housing developers
- Shelter providers
- Faith-based organizations
- Health departments
- Schools



Partnering with PWLE

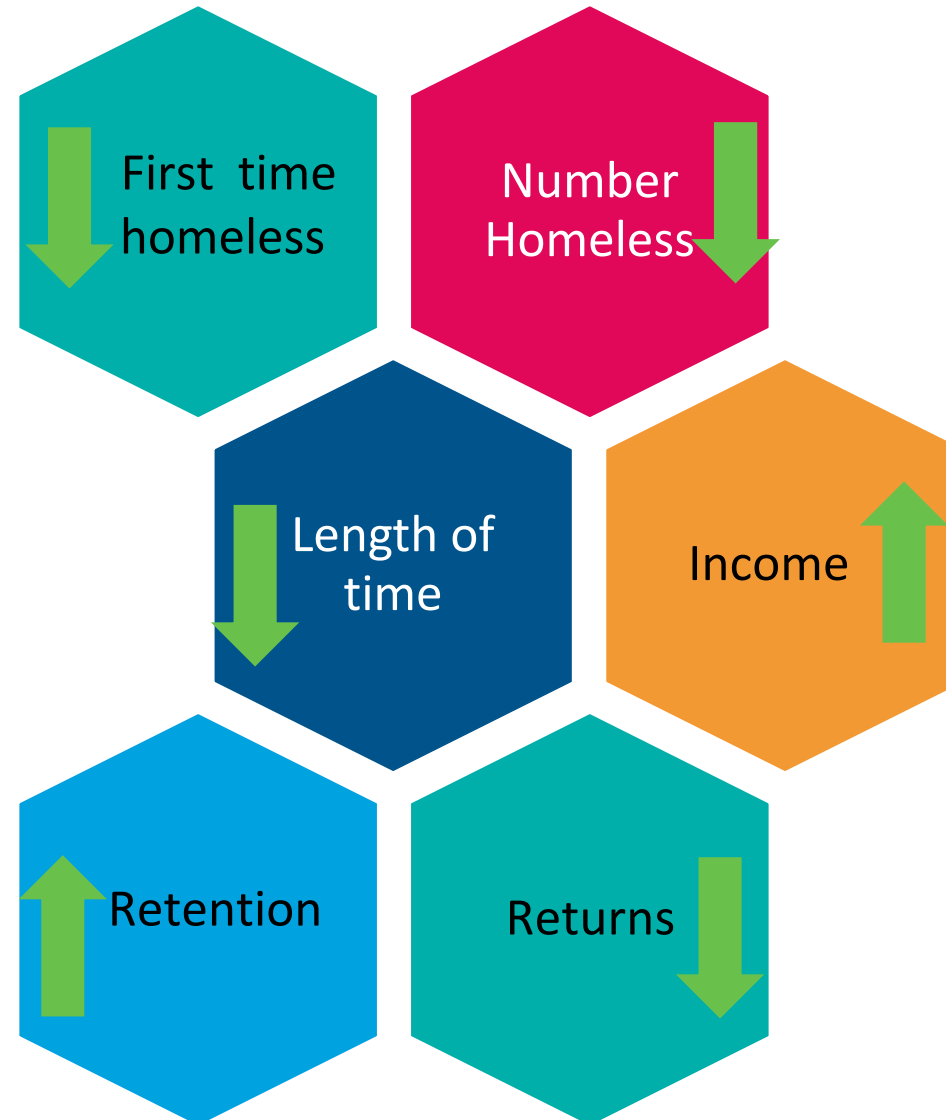
- New Term: People With Lived Experience (PWLE)
- Nothing about us without us!
- Training and support
- Racial equity
- Meaningful and productive engagement



Performance & Benchmarks



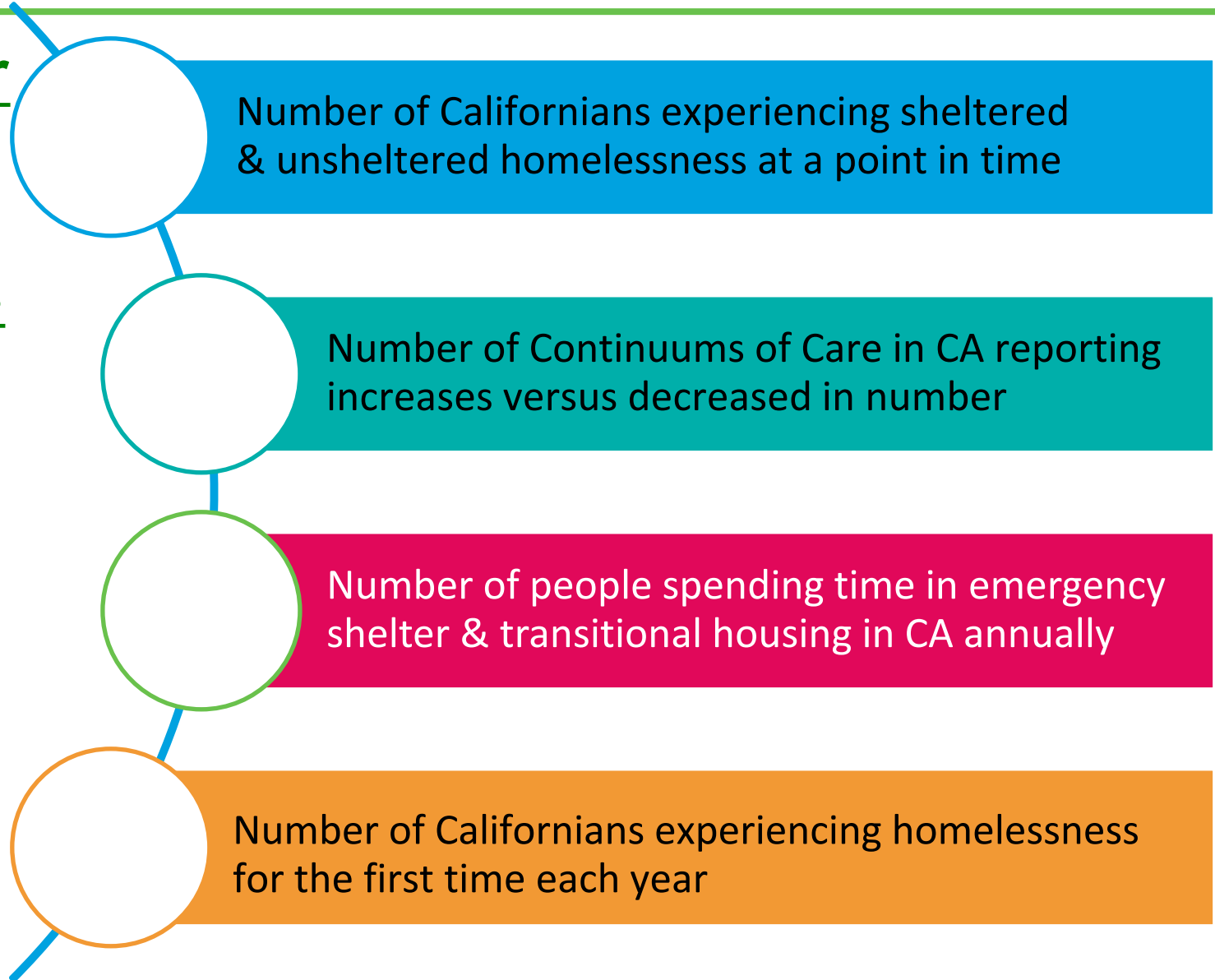
HUD System Performance Measures





State of CA Key Measures

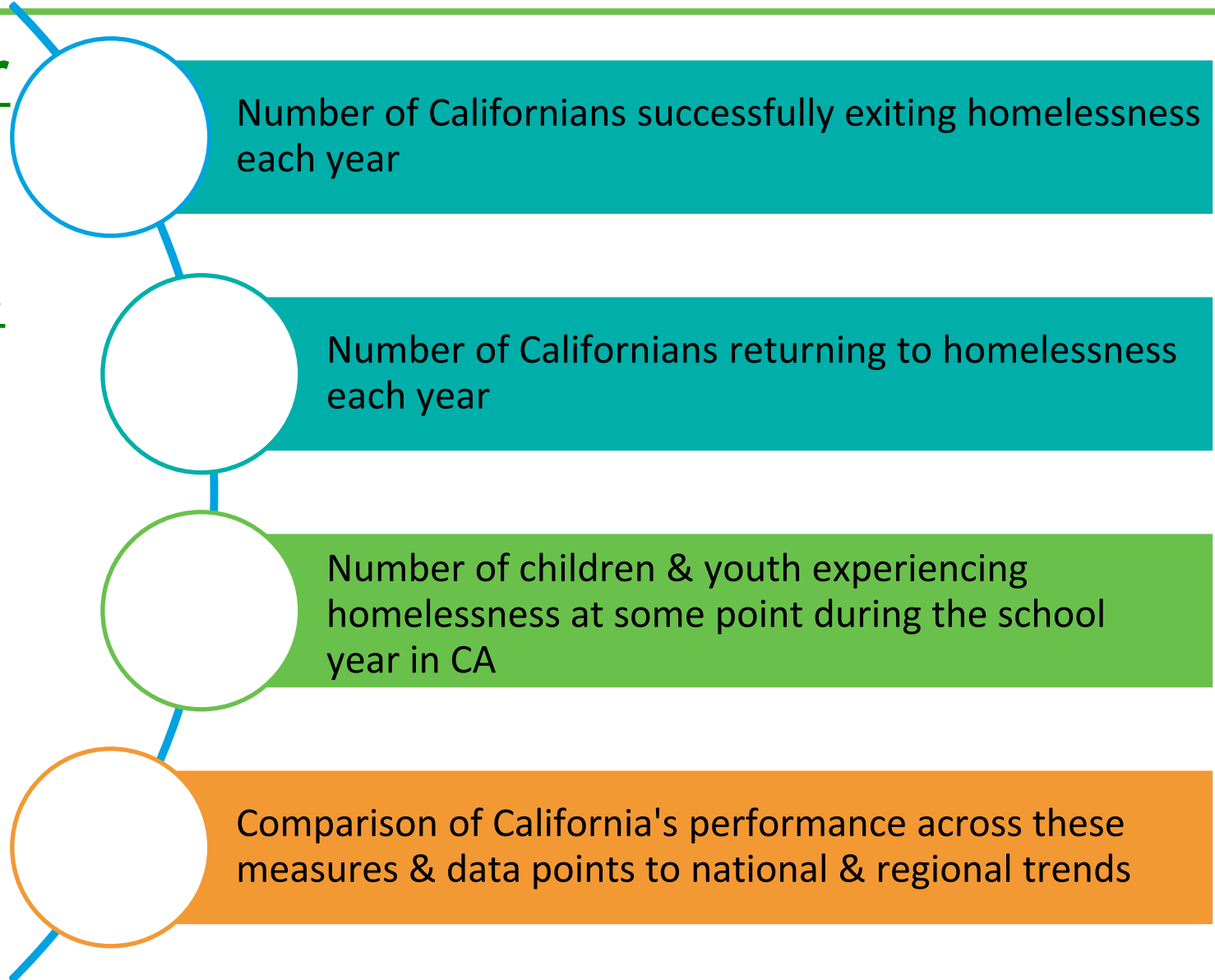
Action Plan for Preventing and Ending Homelessness in CA





State of CA Key Measures

Action Plan for Preventing and Ending Homelessness in CA





Thank you for listening.